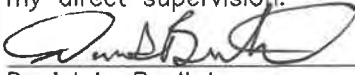
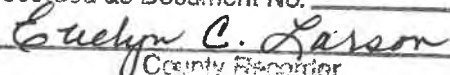


<p>Corners to be Indexed</p> <p>NE 3-106-42 N1/4 3-106-42 E1/4 3-106-42</p>	<p>STATE OF MINNESOTA, } ss. COUNTY OF MURRAY, }</p> <p>I hereby certify that the within Instrument was filed in this office for record on the <u>13TH</u> day of <u>DECEMBER</u> A.D. 20 <u>19</u> at <u>9:00</u> o'clock <u>A.</u> M., and was duly recorded as Document No. _____</p>
<p>I hereby certify that this document and the data contained herein was prepared by me or under my direct supervision.</p> <p> Daniel L. Bueltel License No. <u>43844</u></p>	<p><u>6/28/2019</u> Date</p> <p> County Recorder</p>

CERTIFICATE OF LOCATION OF GOVERNMENT CORNER

Land survey monuments situated in Section 3, Township 106, Range 42, 5TH P.M.

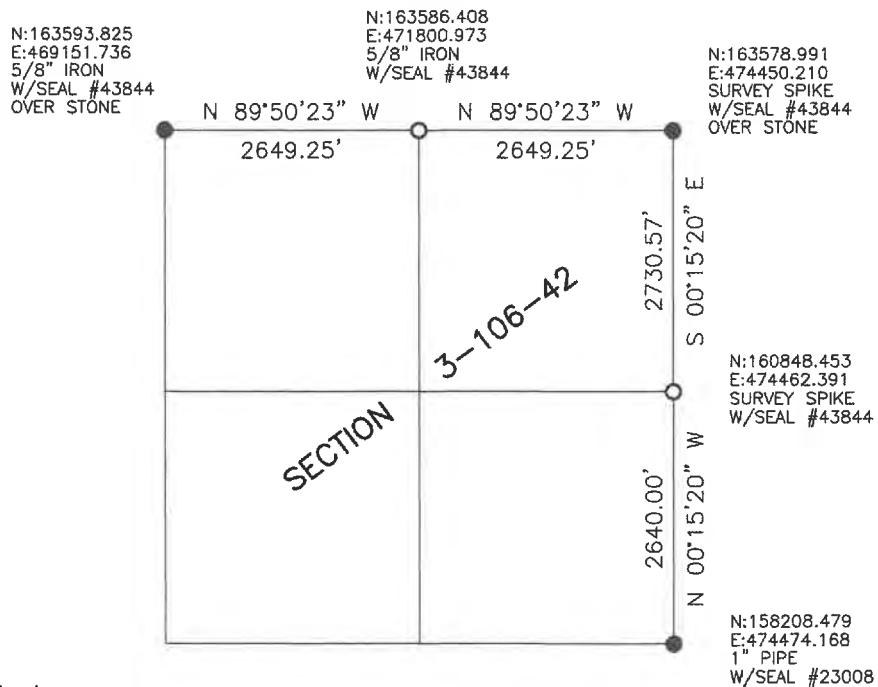
STATE OF MINNESOTA, County of MURRAY

STATEMENT OF EVIDENCE:

- No Date – Original Government Survey of the north line of the township.
- 1866 – Original Government Survey of the subdivision of the township.
- 1902 – J.W. Woolstiencroft shows stones at the NE and N1/4 of Section 3-106-42.
- 1957 – Murray County Highway Department found a stone at the NE corner of Section.



- FOUND MONUMENT
- SET MONUMENT



Minnesota State Plane Coordinate
System Murray County Datum NAD83 (1996)

Statement of Evidence

NE 3-106-42

(No Date) J.W. Myers did the original survey of the north line of the township.

On May 9, 1902, J.W. Woolstiencroft shows a large stone at the corner.

On September 7, 1957, the Murray County Highway Department found a field stone at the corner.

On September 26, 2005, Zieske Land Surveying found an iron monument in place below road surface.

On June 19, 2015, the Murray County Highway Department found a MAG nail at the surface of the road.

On June 19, 2019, Bueltel-Moseng Land Surveying dug with a backhoe and found a large stone 3 feet below the road surface. We set a survey spike with seal #43844 over the stone at the road surface.

N1/4 3-106-42

(No Date) J.W. Myers did the original survey of the north line of the township.

May 9, 1902, J.W. Woolstiencroft shows small stones around a broken bottle at the corner.

On September 7, 1957, the Murray County Highway Department was not able to find the corner.

On June 12, 2019, Bueltel-Moseng Land Surveying dug with a backhoe and found nothing. We set a 5/8" iron with seal #43844 midway and on line between the section corners. It is in the center of the road and in line with the fences to the north and south.

E1/4 3-106-42

In 1866, J.W. Bishop did the original subdivision of the township.

On June 19, 2019, Bueltel-Moseng Land Surveying set a survey spike with seal #43844 2640 feet north of the southeast corner of the section. It is 4.5' west of the center of the road and in line with the fence to the east.